

KENTUCKY

Kentucky's Maritime Industry Reflects Kentucky Values

JOBS COMMERCE ENERGY SAFETY

Maritime is a critical part of Kentucky's legacy and its future. Today's industry is a reflection of Kentucky values.

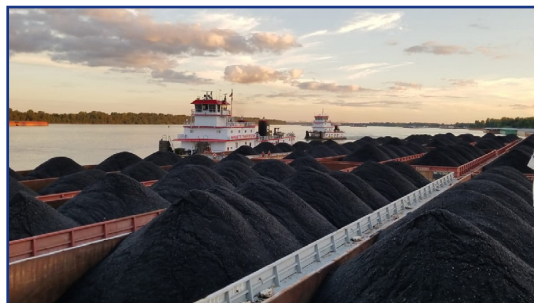
Together we promote:

- A robust workforce
- Living wage jobs
- A strong economy
- An efficient supply chain

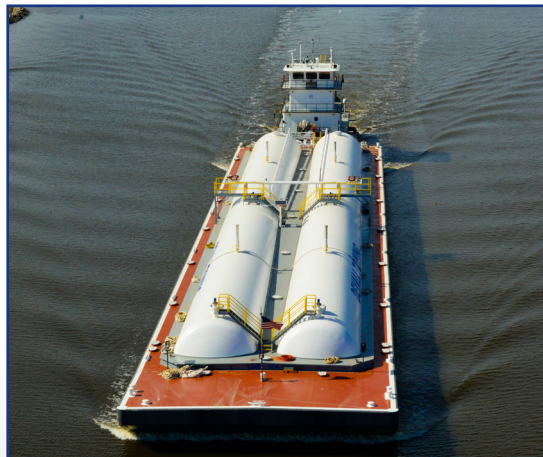
The Mississippi and Ohio rivers connect to form one of the most robust inland waterway networks in the country. In total, Kentucky is home to nearly 1,600 miles of navigable waterways, among the highest in the nation.

Thanks to this incredible resource, Kentucky's maritime industry moves 82 million tons of freight each year. That includes 50 million tons of energy products, including \$2 billion worth of gasoline. Moving these critical products by water is far safer than by truck or rail. It is also the most fuel-efficient method of moving freight.

Thousands of Kentucky workers are employed in maritime. These good-paying jobs cannot be exported thanks to the Jones Act. The Kentucky maritime industry will continue to be a source of well-paying, secure jobs for generations to come.



More than 20 million tons of coal, lignite, and coke are moved safely on Kentucky's waterways each year.



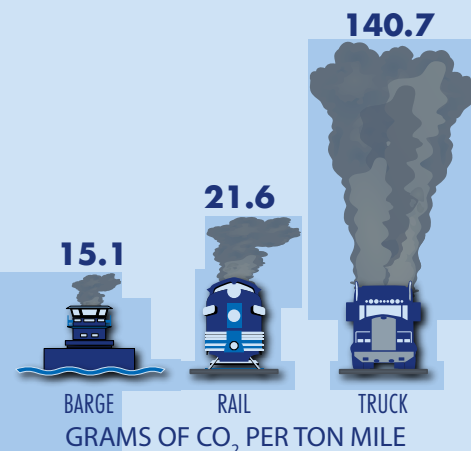
Manufacturing in Kentucky is heavily reliant on waterway transportation. More than 12,000 jobs in the chemical manufacturing sector depend on the waterways.

Nearly \$12 billion worth of freight moves through Kentucky's waterways every year. Kentucky is a critical link in the efficient movement of the products that we use every day.

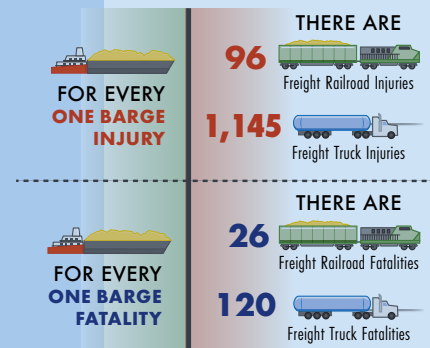


POSITIVE ENVIRONMENTAL IMPACT

WHICH MODE IS THE MOST ENVIRONMENTALLY FRIENDLY?



WHICH MODE IS THE SAFEST?



KENTUCKY

The maritime industry provides thousands of well-paying jobs in Kentucky. These non-exportable jobs offer ladders of career advancement without the need for a college degree, or college debt.



Towboat captains are licensed every five years by the Coast Guard and have a minimum of 11,520 hours of training – more than a commercial airline pilot.



Thanks to the Jones Act, goods moved on Kentucky waters are moved by American-owned, American-crewed, and American-built vessels. These vessels are the eyes and ears of the waterways – helping provide security to the nation.

KENTUCKY ECONOMIC IMPACT

HOW DOES MARITIME SUPPORT KENTUCKY JOBS?

MARITIME INDUSTRY

20,730
TOTAL JOBS

\$2.3 BILLION
LABOR INCOME

HOW DOES MARINE TRANSPORT BENEFIT KENTUCKY'S ECONOMY?

INDUSTRIES DEPENDENT ON MARINE TRANSPORT

\$30.7 BILLION
TOTAL OUTPUT

\$12 BILLION
GROSS STATE OUTPUT

\$1.2 BILLION
STATE/LOCAL TAX REVENUE



ABOUT AWO

The **American Waterways Operators** is the tugboat, towboat and barge industry's advocate, resource and united voice for safe, sustainable and efficient transportation on America's waterways, oceans and coasts. Industry vessels move more than 665 million tons of America's commerce each year on the U.S. inland and intracoastal waterways, the Atlantic, Pacific and Gulf Coasts and the Great Lakes.

For more information about the importance of waterway transportation, please contact AWO at **(703) 841-9300** or visit AWO's website at **www.americanwaterways.com**.

Information and data sources: AWO, Texas Transportation Institute, American Maritime Partnership



The American Waterways Operators

www.americanwaterways.com