



# ALABAMA

## Alabama's Maritime Industry Reflects Alabama Values

JOB'S    INDUSTRY    AGRICULTURE    SAFETY

Maritime is a critical part of Alabama's legacy and its future. Today's industry is a reflection of Alabama values.

Together we promote:

- A robust workforce
- Living wage careers
- A strong economy and supply chain
- Safety and sustainability



It is no surprise that Alabama has a robust maritime industry. As home to the Tennessee, Tombigbee, Alabama, Black Warrior, Mobile, Coosa, and Chattahoochee rivers, as well as Mobile Bay, the Intracoastal Waterway, and the Gulf of Mexico, Alabama has water resources rivaled by few other states.

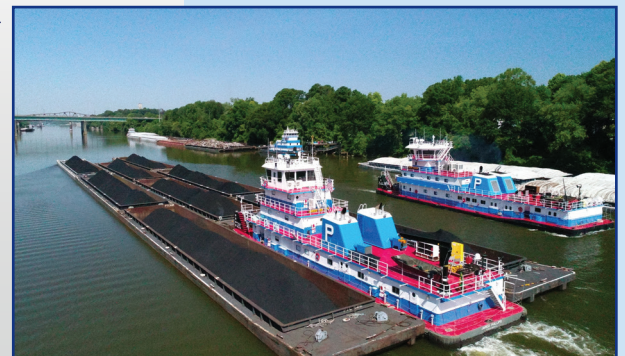
Metal mined and forged in Alabama, as well as essential metallurgic inputs, chemicals, agricultural products, and energy products, rely on our waterways to get where they are needed. Economical, safe, and reliable barge transportation is critical to getting these commodities to their markets, where they serve as the building blocks of America's and Alabama's economy.

Whether it is a towboat moving grain on the Tenn-Tom, a tugboat helping larger ships maneuver in the Gulf, or the shipyards in Mobile Bay, Alabama's maritime industry provides thousands of family wage careers without the need for a college degree. And thanks to the Jones Act, which requires vessels in domestic commerce to be owned, built, and crewed by Americans, these jobs cannot be exported.



More than 68.4 million tons of freight move on Alabama's waterways every year. Alabama is a critical link in the efficient movement of the products that we use every day.

More than half a billion dollars of grains are moved by barge to Alabama every year, providing key inputs for Alabama's robust food processing industry.



**ALABAMA ECONOMIC IMPACT**  
HOW DOES MARITIME SUPPORT ALABAMA JOBS?

MARITIME INDUSTRY

**12,860**  
TOTAL JOBS

**\$729.4 MILLION**  
LABOR INCOME

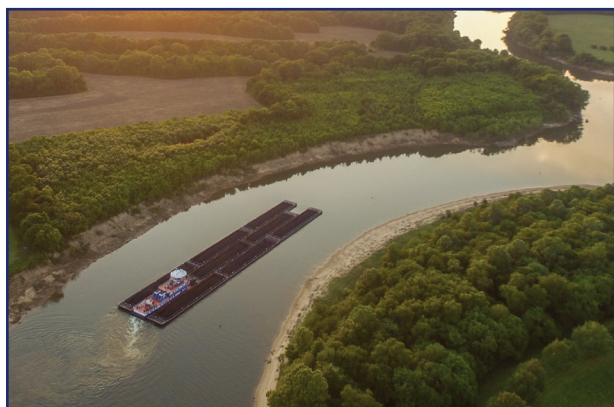
HOW DOES MARINE TRANSPORT BENEFIT ALABAMA'S ECONOMY?

INDUSTRIES DEPENDENT ON MARINE TRANSPORT

**\$57.8 BILLION**  
TOTAL OUTPUT

**\$1.7 BILLION**  
STATE/LOCAL TAX REVENUE

# ALABAMA



◀ Alabama has more than 1,200 miles of navigable waterways with 19 public ports throughout the state.

Thanks to the Jones Act, goods moved on Alabama waters are moved by American-owned, American-crewed, and American-built vessels. These vessels are the eyes and ears of the waterways – helping provide security to the nation.



▲ The industry provides thousands of family wage careers in Alabama. These non-exportable jobs offer a strong ladder of advancement without the need for a college degree, or college debt.

Towboat and tugboat captains are licensed every 5 years by the Coast Guard and have a minimum of 11,520 hours of training – more than a commercial airline pilot.



## ABOUT AWO

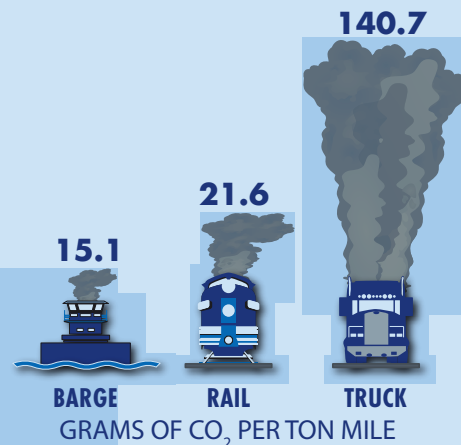
The **American Waterways Operators** is the tugboat, towboat and barge industry's advocate, resource and united voice for safe, sustainable and efficient transportation on America's waterways, oceans and coasts. Industry vessels move more than 665 million tons of America's commerce each year on the U.S. inland and intracoastal waterways, the Atlantic, Pacific and Gulf Coasts and the Great Lakes.

For more information about the importance of waterway transportation, please contact AWO at **(703) 841-9300** or visit AWO's website at [www.americanwaterways.com](http://www.americanwaterways.com).

Information and data sources: AWO, NWF, U.S. Chamber of Commerce

## POSITIVE ENVIRONMENTAL IMPACT

WHICH MODE IS THE MOST ENVIRONMENTALLY FRIENDLY?



WHICH MODE IS THE SAFEST?

